

Settings for label printers

Brother QL 560 and QL 570 with fanfold paper

Installation of driver software

In Windows 10, the drivers are automatically installed after plugging in and turning on the printer.

Note: For Windows 7 and Windows 8.1, please install the device drivers prior to switching on the label printer. They can be found on the USB stick also delivered, under useful.

Apo-Ident software settings

From **Label printer settings**, select **<Standard label printer>** your printer (Brother QL 560 or QL 570) from the list.

Then select the following* settings:

- Page size: 62mm
- Orientation: check rotate 0°

Advanced Layout Settings:

- Label width / mm: 62,0
- Label height / mm: 35,0
- X-offset / mm: 0,0
- Y-offset / mm: 0,0
- Scale factor: 1,00

* These figures refer to the use of the continuous label roll type DK-22205.

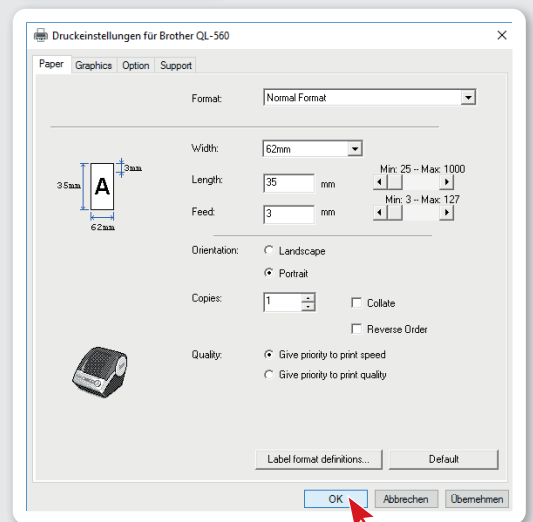
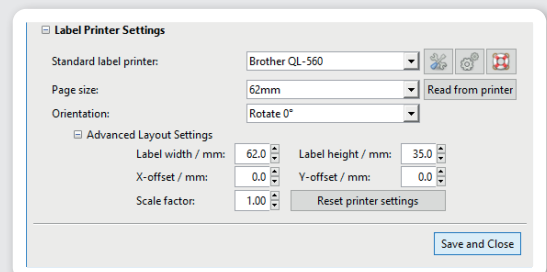
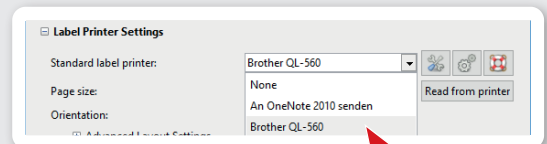
Click the **<tool-icon>** on the right side of the list „Open printer settings“. Change the following settings in the open dialog box:

- Format: Normal Format
- Width: 62mm
- Length: 35,0
- Feed: 3
- Orientation: Portrait

Click on **<Apply>** and confirm with **<OK>**. You are now back to the Apo-Ident software settings.

Note: Before you save your settings, you may do a test print. In order to do that, click the middle button next to the description of the chosen printer.

Apply with **<Save and Close>** if your test print was successful. If the test print failed then please contact customer service.



Settings for label printers

Brother QL 560 and QL 570 with single label

Installation of driver software

In Windows 10, the drivers are automatically installed after plugging in and turning on the printer.

Note: For Windows 7 and Windows 8.1, please install the device drivers prior to switching on the label printer. They can be found on the USB stick also delivered, under useful.

Apo-Ident software settings

From **Label printer settings**, select **<Standard label printer>** your printer (Brother QL 560 or QL 570) from the list.

Then select the following* settings:

- Page size: 29mm x 90mm
- Orientation: rotate 90° clockwise

Advanced Layout Settings:

- Label width / mm: 29,0
- Label height / mm: 89,9
- X-offset / mm: 0,0
- Y-offset / mm: 0,0
- Scale factor: 1,00

* These figures refer to the use of the single label type DK-11201.

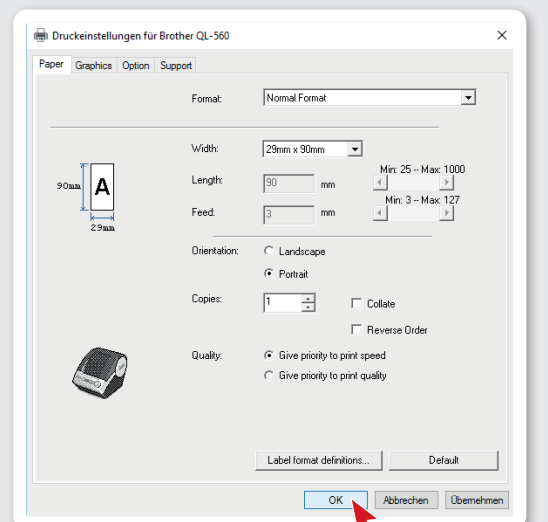
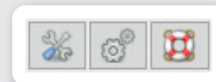
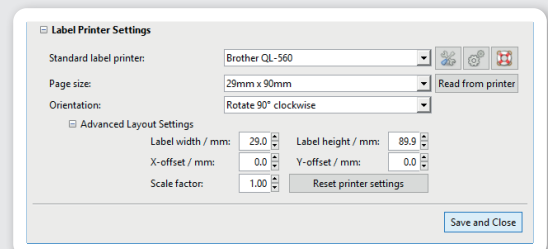
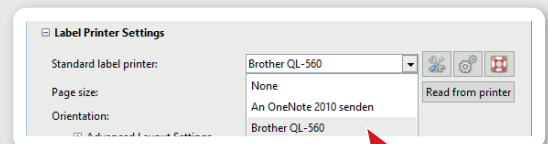
Click the **<tool-icon>** on the right side of the list „Open printer settings“. Change the following settings in the open dialog box:

- Format: Normal Format
- Width: 29mm x 90mm
- Length: 89,9
- Feed: 3
- Orientation: Portrait

Click on **<Apply>** and confirm with **<OK>**. You are now back to the Apo-Ident software settings.

Note: Before you save your settings, you may do a test print. In order to do that, click the middle button next to the description of the chosen printer.

Apply with **<Save and Close>** if your test print was successful. If the test print failed then please contact customer service.



If you have any questions, please contact your local distributor or us: